

Výtah z dokumentu

UM2237 User manual, STM32CubeProgrammer software description

1.2.4 DFU driver

If you are using the STM32 device in USB DFU mode, you need to install the STM32CubeProgrammer's DFU driver by running the "STM32 Bootloader.bat" file. This driver is provided with the release package, it can be found in the DFU Driver folder.

Note: If you have the DFUSE driver installed on your machine, first, you need to uninstall it and then run the previously mentioned ".bat" file. You must check the 'Delete the driver software for this device' option to avoid reinstalling the old driver later when a board is plugged in.

Figure 2. Deleting the old driver software

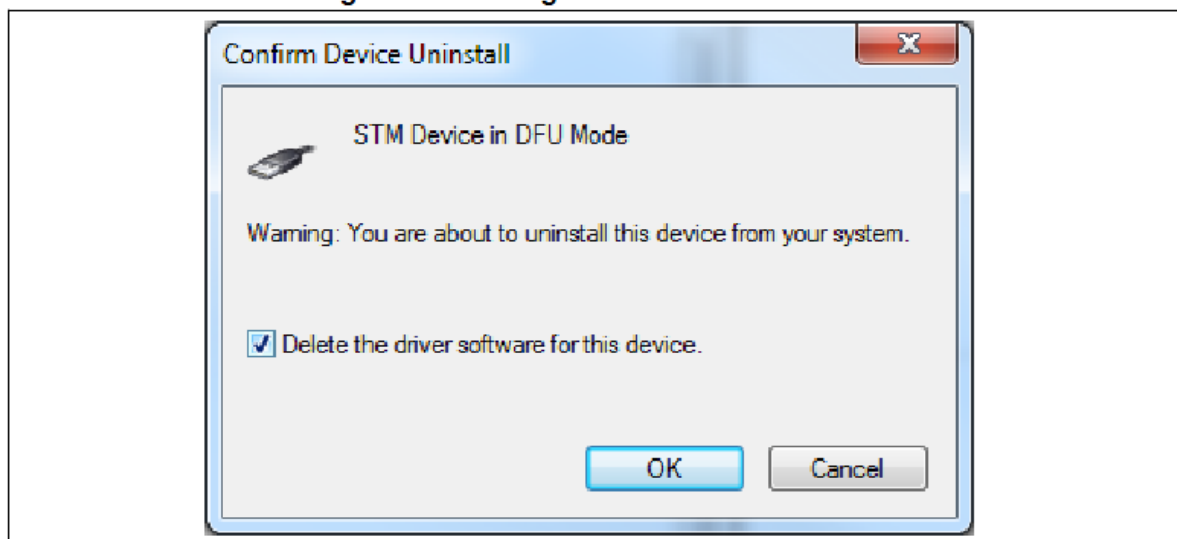


Figure 3. STM32 DFU device with DfuSe driver

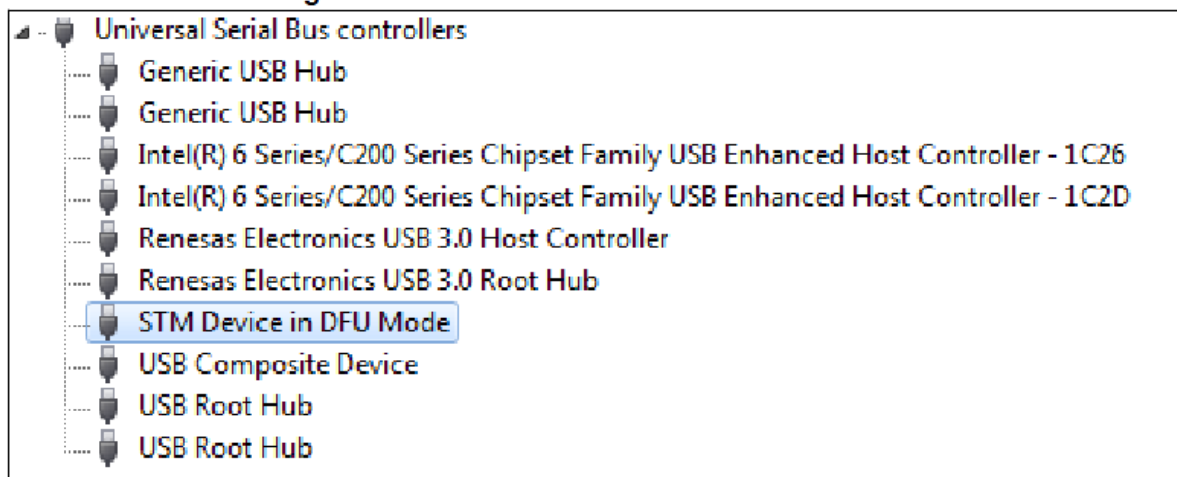
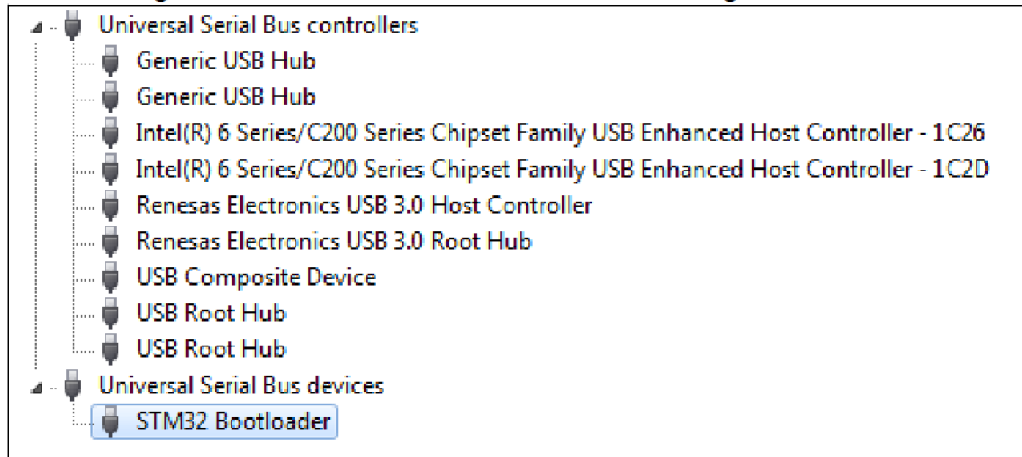


Figure 4. STM32 DFU device with STM32CubeProgrammer driver



Note: When using USB DFU interface or STLink interface on a Windows 7 PC, make sure that all of your USB 3.0 controller's drivers are up to date. Older versions of the drivers may have a bug that prevents access or causes connection problems with USB devices.

1.2.5 ST-LINK driver

To be able to connect to a STM32 device through a debug interface using ST-LINK/V2, ST-LINKV2-1 or ST-LINK-V3, you need to install the ST-LINK driver by running the "stlink_winusb_install.bat" file. This driver is provided with the release package, it can be found under the "Driver/stsw-link009_v3" folder.